

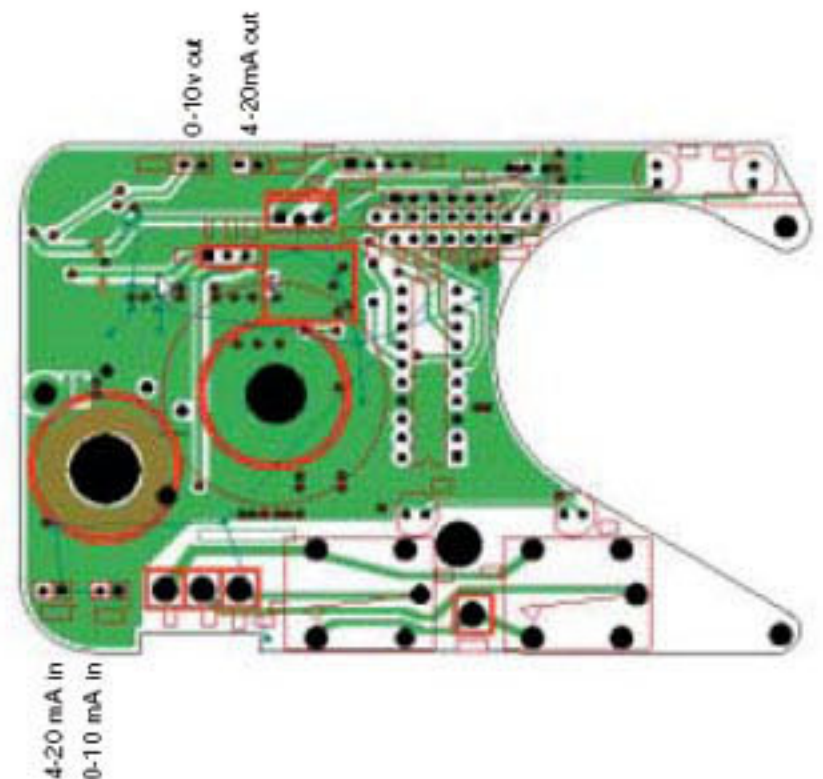
DPS 2000 数字式智能型定位器

DPS 2000 DIGITAL POSITIONING SYSTEM

| 特征 GENERAL FEATURES | |
|-----------------------------|---|
| 电压 VOLTAGE RANGE | 220 VAC - 110 VAC - 24 VAC 24 VDC - 12 VDC |
| 输入信号 INPUT SIGNAL | 4 + 20 mA ó/or 0 + 10 V |
| 输出信号 OUTPUT SIGNAL | 4 + 20 mA ó/or 0 + 10 V |
| 精确度 PRECISION | 3% - 256 posiciones en 90° 3% - 256 positions in 90° |
| 设置点 SETTINGS | Max. - min. - deadband |
| 线性调节 LINEARITY | 3% |
| 抗过载能力 HYSTERESIS | 3% |
| 最小显示值 MINIMUM RESOLUTION | 1% |

DPS 2000是J2执行器可选项产品用于调节功能，通过一个数字式微调控制系统校正模拟输入信号和执行器输出装置进行如下操作，一个输入信号被转化为数字式数值和滑性电阻所在位置值相比较，通过比较使微动装置控制电机旋转方向，确保输入信号和执行器间相平衡，确保执行器所在位置和输入电流信号所要求的位置相吻合，当两者间的平衡达到时定位器保持在原来的位置，直到又有一个新的信号被输入。

如果输入信号不断在改变的，一个内置的时间延误校正器确保定位器不受高频率变化的输入信号干扰而损坏。输入信号可以是0-10V电压信号或4-20mA电流信号。



The DPS 2000 is a factory option to provide modulating function for the J2 actuator in which a microprocessor based module with an analogical input and output performs constant calibrations via a microdigital algorithm system.

An input signal is converted to a digital numeric value and is constantly compared with the position of a potentiometer fitted to the actuators output drive shaft. The microchip subsequently control the direction of rotation of the motor to ensure equilibrium between the input signal and the output drive, ensuring that the desired rest position corresponds with the input signal. When equilibrium is reached, the DPS 2000 maintains the position until a new signal is received.

If the input signal is constantly changing, an internal milliseconds time delay in responding prevents hunting.

Input signals can be either 0-10V or 4-20mA

DPS 2000 is available for "H" and "L" series.

